

*Range*

# MONOGRAM STEEL



**PRICELIST**

**PRESS**

06.10.2025



## Range

# MONOGRAM STEEL

MONOGRAM STEEL is a modern dining table in Scandinavian style. The practical and narrow design of the steel leg ensures that there is room for chairs all around the table.

### Designed by

Cecilie Kamp



### This range include

Dining tables | Coffee tables

## Features



### Design elements

Choose between different designs both with and without extension.



### Custommade

In addition to our many standard sizes we can accommodate special requests.



### Wood colours

Choose between more than 10+ different wood colours in both ash and oak.



### Sustainable choice

Solid wood furniture can last a lifetime with proper maintenance

## Social media

Follow and share with us on Instagram, Pinterest & LinkedIn.

 @kristensenfurniture | #kristensenfurniture

 kristensenfurniture | Kristensen & Kristensen

 Kristensen & Kristensen | #kristensenfurniture

## Pricelist- and imagebank

On our Collection-site you as a retailer always have access to the latest pricelists and hundreds of high resolution images and videos  
- Free to use in your marketing!

If you do not have a password yet, please contact the Kristensen sales office in Denmark.

### LINK:

[collection.kristensen.com](https://collection.kristensen.com)

# PRICELIST

Round dining table (undivided)



MONGRAM STEEL Round dining table (undivided)		
MASTER NO.: MGSB		
Description	Price (EUR)	
	Ash	Oak
<b>3 CM PLATE (H74 cm)</b>		
Ø160		
Ø150		
Ø140		
Ø130		
Ø120		
Ø110		
Ø100		
<b>4 CM PLATE (H75 cm)</b>		
Ø160		
Ø150		
Ø140		
Ø130		
Ø120		
Ø110		
Ø100		

1/2

Brushed stainless steel legs = +10%

All prices are purchase prices in Euro.

We accept no liability for any errors or omissions.

**kristensen:kristensen®**

All rights reserved Kristensen & Kristensen A/S

3 / 11

# PRICELIST

Round dining table (devided)



MONOGRAM STEEL Dining table (extendable)				
MASTER NO.: MGSM				
Description	3 cm thick topplate (H74 cm)		4 cm thick topplate (H75 cm)	
	Price (EUR)		Price (EUR)	
	Ash	Oak	Ash	Oak
Ø180				
Ø170				
Ø160				
Ø150				
Ø140				
Ø130				
Ø120				
Ø110				
Ø100				
Extendable for 4 leaves*				
Extendable for 1 leaf**				
* Comes with 2 support legs    ** Comes with 1 support legs				
Leaf for extendable dining table				
MASTER NO.: MGT				
Description	3 cm thickness		4 cm thickness	
	Price (EUR)		Price (EUR)	
	Ash	Oak	Ash	Oak
Ø180 leaf 50x180 cm				
Ø170 leaf 50x170 cm				

Brushed stainless steel legs = +10%

All prices are purchase prices in Euro.

We accept no liability for any errors or omissions.

**kristensen:kristensen®**

All rights reserved Kristensen & Kristensen A/S

4 / 11

# PRICELIST

## Round coffee table



MONOGRAM STEEL Round coffee table (H: 52 cm, plate thickness 3 cm)		
MASTER NO.: MGSC		
Size (cm)	Price (EUR)	
	Ash	Oak
Ø120		
Ø100		
Ø90		
Ø80		

Brushed stainless steel legs = +10%

All prices are purchase prices in Euro.

We accept no liability for any errors or omissions.

# PRICELIST

Round bar table



Bar Table		
MASTER NO.: WK22		
W/leg 22, H92 cm, plate thickness 3 cm		
Size (cm)	Price (EURO)	
	ASK	EIK
Ø120		
Ø100		

Brushed stainless steel legs = +10%

All prices are purchase prices in Euro.

We accept no liability for any errors or omissions.

# WOOD COLOURS



## Images for guiding purpose only!

The wood structure and colour will vary from ash and oak.

We therefore recommend using the wood samples/exhibition furniture to get a more accurate impression.



**ASH C3 / OAK C3**  
Lacquered

We treated this wood with lacque.

**C3 are only made for products without patination.**



**ASH C4 / OAK C4**  
Natural oiled

We treated this wood with our 'Natural oil'.



**ASH C6 / OAK C6**  
White oiled

We treated this wood with our 'White oil'.



**ASH C8 / OAK C8**  
Soaped

We treated this wood with soap.



**ASH C11 / OAK C11**  
Dark grey oiled

We treated this wood with our 'Black oil'.



**ASH C12 / OAK C12**  
Antique brown oiled

We treated this wood with our 'Antique brown oil'.



**ASH C13 / OAK C13**  
Light grey oiled

We treated this wood with our 'Light grey oil'.



**ASH C14 / OAK C14**  
Black stained & oiled

We treated this wood with black stain, and treated it with a wax oil.

**\* We recommend choosing the black matte lacquer color C44 for tabletops and chairs!**



**ASH C15 / OAK C15**  
Mocca brown oiled

We treated this wood with our 'Mocca brown oil'.



**ASH C16**  
Warm white oiled

We treated this wood with our 'Warm white oil'.

**C16 is only for ash**



**ASH C20 / OAK C20**  
Grey brown oiled

We treated this wood with our 'Grey brown oil'.



**ASH C44 / OAK C44**  
Black matt lacquered

We treated this wood with black stain, and treated it with matt lacque.

**C44 is only for products without patination.**

**\*Color C14 is a black stain with oil on top, which requires careful and frequent oiling. If this is not adhered to, there is a risk that the black underlying stain will rub off.**



For more information about maintenance, please visit our website:  
**WWW.KRISTENSEN.COM**



We also offers our own repairoils for our products  
- contact us if you need a pricelist.

**Brushed stainless steel legs = +10%**

*All prices are purchase prices in Euro.*

*We accept no liability for any errors or omissions.*

**kristensen:kristensen®**

*All rights reserved Kristensen & Kristensen A/S*

7 / 11

## WOOD FINISH



### UP

#### Without patination

The wood is planned and sanded to achieve a smooth surface.

*With few and smaller knots.*

**Storage furniture can only be made with this finish!**

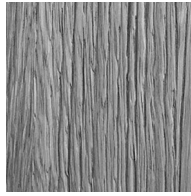


### SC

#### Soft Cracks

Naturally occurring cracks are made more visible which gives a rustic look with cracks in the surface.

*May contain more and larger knots.*



### RL

#### Raw Look

We brush off the layer of softer wood which gives a look of wood that has been roughened by natural wear.

*May contain more and larger knots.*



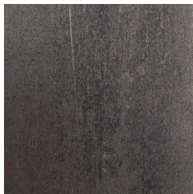
### FK

#### Filled Knots

The knots are filled and the wood is planned and sanded to achieve a smooth surface.

**Only for OAK!**

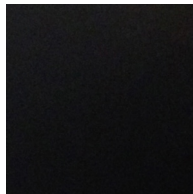
## STEEL COLOUR & FINISH



### A

#### Industrial steel

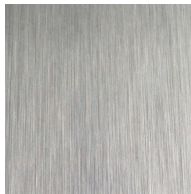
Industrial steel has a raw and matte appearance with shades of colors emerged during casting.



### B

#### Black painted steel

Black painted steel has a graphical and simple look, that fits nicely in most homes.



### C

#### Brushed stainless steel

Brushed, stainless steel has an elegant appearance with a uniform finish created by hand.

**Extra cost!**

## EDGE PROFILES



### EDGE PROFILE 1

Harlekin



### EDGE PROFILE 2

Arched edge



### EDGE PROFILE 3

Pisa



### EDGE PROFILE 4

Straight

**Brushed stainless steel legs = +10%**

*All prices are purchase prices in Euro.*

*We accept no liability for any errors or omissions.*

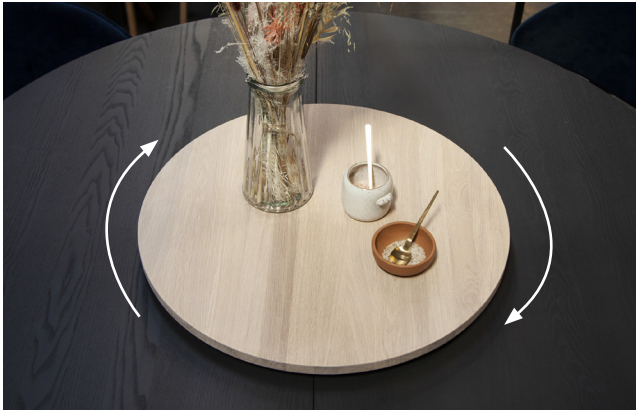
**kristensen:kristensen®**

*All rights reserved Kristensen & Kristensen A/S*

8 / 11

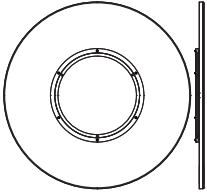
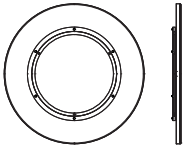
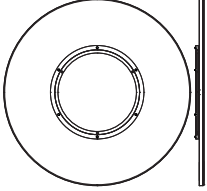
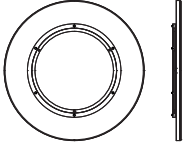
# PRICELIST

*Lazy Susan – turntable (rotating tray)*



The plate has a turning function.  
The product can be used with all our round dining tables.



LAZY SUSAN, plate thickness 2 cm			
MASTER NO.: LAZY			
description	measure (cm)		price (EUR)
	D	H	
 Lazy Susan turning plate in ASH	80	4	<b>213</b>
 Lazy Susan turning plate in ASH	60	4	<b>186</b>
 Lazy Susan turning plate in OAK	80	4	<b>287</b>
 Lazy Susan turning plate in OAK	60	4	<b>241</b>

Edge profile for  
LAZY SUSAN



**4**  
Straight edge

Ash is standard - Oak + 25%

All prices are purchase prices in Euro.

We accept no liability for any errors or omissions.

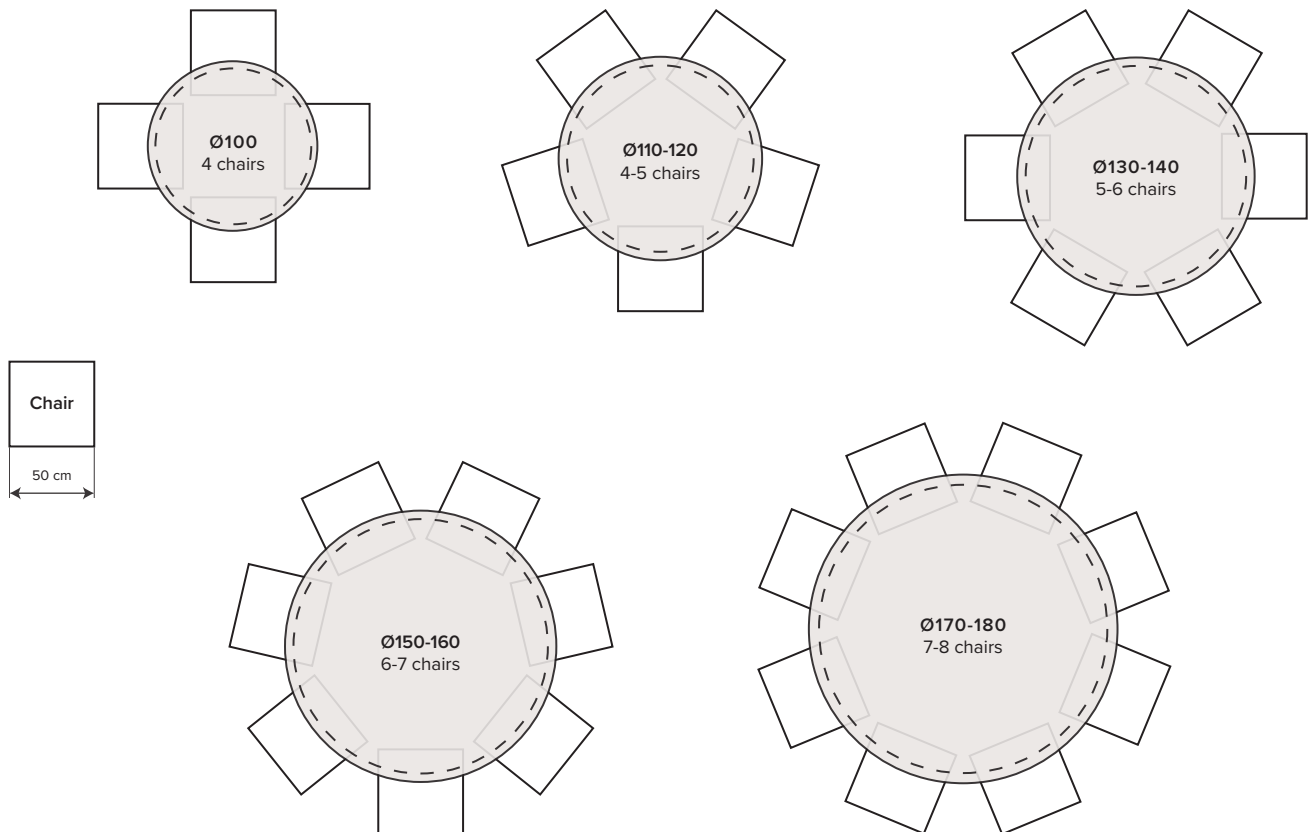
**kristensen:kristensen®**

All rights reserved Kristensen & Kristensen A/S

9 / 11

# NUMBER OF CHAIRS AROUND ROUND TABLES

**IMPORTANT!** The illustrations are for guidance only and may vary depending on leg placement and the size of the chair.



Brushed stainless steel legs = +10%

All prices are purchase prices in Euro.

We accept no liability for any errors or omissions.

## CONTACT

### CUSTOMISED TABLES

We are able to produce all our table types in special sizes. Furniture in special sizes requires special handling both in terms of manual handling, new drawings, machine settings and packaging. We therefore include a surcharge for products in special sizes, whether the product will be larger or smaller. If you want a table in a smaller size e.g. the price is added 15% on the price of the nearest standard size.

*Contact us for more information!*

#### Agent, Norway

Lennarth Gryting

✉ lg@kristensen.dk

☎ +47 922 95 400

#### Agent, Finland

Jokko Salmevaara

✉ jokko.salmevaara@boknas.fi

☎ +358 401 958 886

#### Sale, Sweden

Anne Moberg

✉ am@kristensen.dk

☎ +46 707580279

#### Agent, UK

Brendan Brett

✉ kristensen@theukagency.co.uk

☎ +44 77 34 265 599

#### Head office, Denmark

##### PHONE:

+45 75470303

##### WEBSITE:

www.kristensen.com

##### MAIL:

kristensen@kristensen.dk

##### ORDER MAIL:

order@kristensen.dk

##### CLAIMS:

claim@kristensen.dk

##### FAX:

+45 75470304

##### ADDRESS:

Kristensen & Kristensen A/S  
Storstrømsvej 44  
6715 Esbjerg N  
DK - Denmark

##### TERMS & CONDITIONS

Can be sent via email by request – contact:  
**kristensen@kristensen.com**

