

Range
—
ZHAPO



PRICELIST
PURCHASE – EURO

EXPORT
01.06.2024



Range

ZHAPO

This range stands out because of its sculptural legs and simple yet expressive details. The range was created for us by the talented Danish design duo Says Who.

Designed by

Says Who



This range include

Dining tables
Sideboards

Features



Design elements

Choose between different designs on plates and edgeprofiles.



Sustainable choice

These tables are made of FSC® 100% certified wood. The sideboards are made of FSC® MIX Credit certified wood and veneer.



Wood colours

Choose between more than 10+ different wood colours.



Custommade

In addition to our many standard sizes we can accommodate special requests.

Social media

Follow and share with us on Instagram.



@kristensenfurniture | #kristensenfurniture

Pricelist- and imagebank

On our Collection-site you as a retailer always have access to the latest pricelists and hundreds of high resolution images and videos
- Free to use in your marketing!

If you do not have a password yet, please contact the Kristensen sales office in Denmark.

LINK:

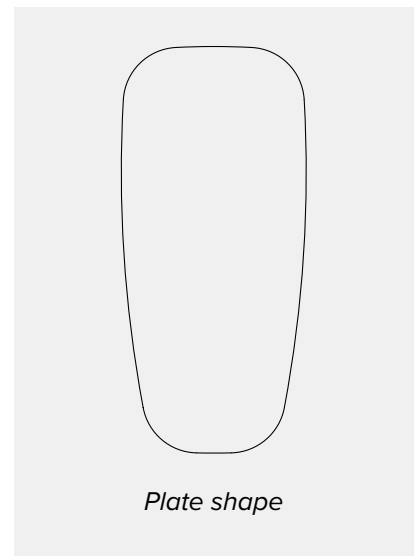
collection.kristensen.com

PRICELIST

Zhapo dining table



OVERALL ITEM NO.: F-SZD			
Zhapo dining table with 3 cm plate thickness			
Measures (cm)	Item no.	Price (EUR)	
		Ash	Oak
240x100 H74	F-SZD3-2410		
220x100 H74	F-SZD3-2210		
200x100 H74	F-SZD3-2010		
180x100 H74	F-SZD3-1810		
Zhapo dining table with 4 cm plate thickness			
Measures (cm)	Item no.	Price (EUR)	
		Ash	Oak
240x100 H74	F-SZD4-2410		
220x100 H74	F-SZD4-2210		
200x100 H74	F-SZD4-2010		
180x100 H74	F-SZD4-1810		

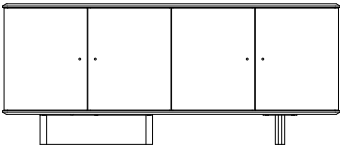
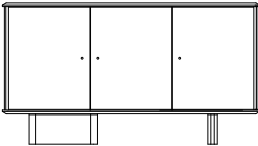


These tables are not prepared for leaves!

PRICELIST

Zhapo sideboard



OVERALL ITEM NO.: F-SZS				
Zhapo sideboard				
Doors / Drawers	Measures (cm)	Item no.	Price (EUR)	
			Ash	Oak
4 / 0 	180x45 H75	F-SZS1		
3 / 0 	136,5x45 H75	F-SZS2		

The doors are with handles and soft-close!

WOOD COLOURS



Images for guiding purpose only!

The wood structure and colour will vary from ash and oak.

We therefore recommend using the wood samples/exhibition furniture to get a more accurate impression.



ASH C3 / OAK C3
Lacquered

We treated this wood with lacque.

C3 are only made for products without patination.



ASH C4 / OAK C4
Natural oiled

We treated this wood with our 'Natural oil'.



ASH C6 / OAK C6
White oiled

We treated this wood with our 'White oil'.



ASH C8 / OAK C8
Soaped

We treated this wood with soap.



ASH C11 / OAK C11
Dark grey oiled

We treated this wood with our 'Black oil'.



ASH C12 / OAK C12
Antique brown oiled

We treated this wood with our 'Antique brown oil'.



ASH C13 / OAK C13
Light grey oiled

We treated this wood with our 'Light grey oil'.



ASH C14 / OAK C14
Black stained & oiled

We treated this wood with black stain, and treated it with a wax oil.

C14 is for legs and storage furniture only!



ASH C15 / OAK C15
Mocca brown oiled

We treated this wood with our 'Mocca brown oil'.



ASH C16
Warm white oiled

We treated this wood with our 'Warm white oil'.

C16 is only for ash



ASH C20 / OAK C20
Grey brown oiled

We treated this wood with our 'Grey brown oil'.



ASH C44 / OAK C44
Black matt lacquered

We treated this wood with black stain, and treated it with matt lacque.

C44 is only for plates and can only be made for products without patination.



For more information about maintenance, please visit our website:
WWW.KRISTENSEN.COM



We also offers our own repairolls for our products
- contact us if you need a pricelist.

WOOD FINISH



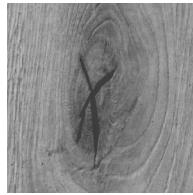
UP

Without patination

The wood is planned and sanded to achieve a smooth surface.

With few and smaller knots.

Storage furniture can only be made with this finish!



FK

Filled Knots

The knots are filled and the wood is planned and sanded to achieve a smooth surface.

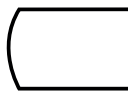
Only for OAK!

EDGE PROFILES



Edge profile 1

Harlekin (angled)



Edge profile 2

Arched



Edge profile 3

Pisa (rounded)



Edge profile 4

Straight



Edge profile 6

Wing



Edge profile 7

Reverse Pisa



Edge profile Z

Zap



Edge profile D

Angled



FSC® CERTIFICATE

A commitment for a better tomorrow

We are happy to announce that from 2021 we have achieved the certification that enables us to offer FSC®-labelled products. FSC® stands for "Forest Stewardship Council" and is an international non-profit organisation dedicated to promote responsible forestry. FSC® certifies forests all over the world to ensure that they meet the highest environmental and social standards.

By signing this contract, we have committed ourselves to living up to stricter social requirements and a more sustainable production. We are proud of supporting the FSC® with their work in looking after the forest workers and the wood industry, as well as fighting unsustainable, illegal forestry and deforestation.

The FSC® certification is one of our key initiatives in creating a more sustainable production. We acknowledge that this sustainable transition is a longer journey and not something that happens overnight. But each day they we are committed in doing a little better than yesterday and keep making progress in this matter.

PLEASE VISIT OUR WEBSITE FOR
MORE FSC® RELATED INFORMATION

www.kristensen.com



The mark of
responsible forestry

CONTACT

CUSTOMISED TABLES

We are able to produce all our table types in special sizes. Furniture in special sizes requires special handling both in terms of manual handling, new drawings, machine settings and packaging. We therefore include a surcharge for products in special sizes, whether the product will be larger or smaller. If you want a table in a smaller size e.g. the price is added 15% on the price of the nearest standard size.

Contact us for more information!

Agent, Norway

Paal Stenvaag

—

✉ post@mobelpaal.no

☎ +47 926 18 628

Agent, Finland

Jokko Salmevaara

—

✉ jokko.salmevaara@boknas.fi

☎ +358 401 958 886

Sweden

Steen Tokkesdal (temporarily)

—

✉ st@kristensen.dk

☎ +45 41 22 00 22

Agent, UK

Brendan Brett

—

✉ kristensen@theukagency.co.uk

☎ +44 77 34 265 599

Head office, Denmark

PHONE:

+45 75470303

WEBSITE:

www.kristensen.com

MAIL:

kristensen@kristensen.dk

ORDER MAIL:

order@kristensen.dk

CLAIMS:

claim@kristensen.dk

FAX:

+45 75470304

ADDRESS:

Kristensen & Kristensen A/S
Storstrømsvej 44
6715 Esbjerg N
DK - Denmark

TERMS & CONDITIONS

—

Can be sent via email by
request – contact:
kristensen@kristensen.com

