

Range
—
WAVE



The mark of
responsible forestry



—
PRICELIST
PURCHASE – EURO

—
EXPORT
01.09.2023



Range

WAVE

WAVE is designed in collaboration with the Danish furniture and interior design store BoShop. The design is practical and understated, but with a playful touch that conveys a soft and inviting feeling.

Designed by

Cecilie Kamp



This range include

- Dining tables
- Coffee tables

Features



Design elements

Choose between different designs on plates and edgeprofiles.



Sustainable choice

This product is produced with Certified wood FSC® 100%.



Wood colours

Choose between more than 10+ different wood colours.



Custommade

In addition to our many standard sizes we can accommodate special requests.

Social media

Follow and share with us on Instagram.



@kristensenfurniture | #kristensenfurniture

Pricelist- and imagebank

On our Collection-site you as a retailer always have access to the latest pricelists and hundreds of high resolution images and videos - **Free to use in your marketing!**

If you do not have a password yet, please contact the Kristensen sales office in Denmark.

LINK:

<https://collection.kristensen.com/>

PRICELIST

Dining table w/R10 rounded corners - w/metal or wooden detail on leg



OVERALL ITEM NO.: F-WAD3				
Dining table w/R10 rounded corners (3 cm plate thickness)				
Description	Measures (cm)	Item no.	Price (EUR)	
			Ash	Oak
Dining table with rounded corners.	280x100 H74	F-WAD3-2810		
	260x100 H74	F-WAD3-2610		
	240x100 H74	F-WAD3-2410		
	220x100 H74	F-WAD3-2210		
	200x100 H74	F-WAD3-2010		
	180x90 H74	F-WAD3-1809		



OVERALL ITEM NO.: F-WA3E				
Leaf w/R5 (3 cm thickness)				
Description	Measures (cm)	Item no.	Price (EUR)	
			Ash	Oak
End leaf 3 cm	50x100	F-WA3E-50x100		
	50x90	F-WA3E-50x90		

Distance between the legs in height 45 cm (chair seat height):

- ca. 155 cm on a 180 cm table
- ca. 175 cm on a 200 cm table
- ca. 195 cm on a 220 cm table
- ca. 215 cm on a 240 cm table
- ca. 235 cm on a 260 cm table
- ca. 255 cm on a 280 cm table

See all metal colors for the leg detail in the back of this pricelist.
 Tables in length 240-280 cm are reinforced with a ledge under the plate.

All prices are purchase prices in Euro.
 We accept no liability for any errors or omissions.

PRICELIST

Boatshape dining table



OVERALL ITEM NO.: F-WADB3				
Boatshape dining table (3 cm plate thickness)				
Description	Measures (cm)	Item no.	Price (EUR)	
			Ash	Oak
Boatshape dining table*. *Not prepared for leaves.	280x100 H74	F-WADB3-2810		
	260x100 H74	F-WADB3-2610		
	240x100 H74	F-WADB3-2410		
	220x100 H74	F-WADB3-2210		
	200x100 H74	F-WADB3-2010		
	180x100 H74	F-WADB3-1810		



Distance between the legs in height 45 cm (chair seat height):

- ca. 120 cm on a 180 cm table
- ca. 140 cm on a 200 cm table
- ca. 160 cm on a 220 cm table
- ca. 180 cm on a 240 cm table
- ca. 200 cm on a 260 cm table
- ca. 220 cm on a 280 cm table



Metal-detail on the leg is not an option on the boatshape tables.
Tables in length 240-280 cm are reinforced with a ledge under the plate.

PRICELIST

Coffee table w/R8 rounded corners - w/metal or wooden detail on leg



OVERALL ITEM NO.: F-WAC3				
Coffee table w/R8 rounded corners (3 cm plate thickness)				
Description	Measures (cm)	Item no.	Price (EUR)	
			Ash	Oak
Coffee table with rounded corners.	140x80 H42	F-WAC3-140842		
	140x80 H46	F-WAC3-140846		
	130x70 H42	F-WAC3-130742		
	130x70 H46	F-WAC3-130746		



R8 corners



See all metal colors for the leg detail in the back of this pricelist.

PRICELIST

Round coffee table - w/metal or wooden detail on leg



OVERALL ITEM NO.: F-WRC					
Round coffee tables (3 cm plate thickness)					
Description	Item no.	Dimensions (cm)		Price (EUR)	
		Ø	H	Ash	Oak
Round coffee table	F-WRC-10042	100	42		
	F-WRC-10046	100	46		
	F-WRC-8042	80	42		
	F-WRC-8046	80	46		
	F-WRC-6042	60	42		
	F-WRC-6046	60	46		



See all metal colors for the leg detail in the back of this pricelist.

RUBIO MONOCOAT WOOD COLOURS

ENVIRONMENTALLY FRIENDLY OIL COLOURS

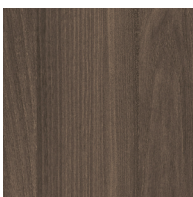
- Rubio Monocoat is sustainable, certified high quality wood protection
- Gives a durable color and protection of the wood
- Very easy to maintain



Rubio[®]
MONOCOAT

www.rubiomonocoat.com

RUBIO MULCH
ASH 521



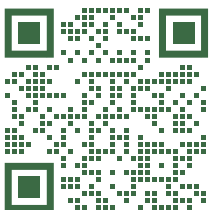
RUBIO OCEAN
ASH 522



RUBIO DAHLIA
ASH 523



GET MORE INFORMATION ABOUT HOW TO TAKE
CARE OF YOUR RUBIO OILED FURNITURE



Scan for direct
link to information
about maintenance

WOOD COLOURS



Images for guiding purpose only!

The wood structure and colour will vary from ash and oak.

We therefore recommend using the wood samples/exhibition furniture to get a more accurate impression.



ASH C3 / OAK C3
Lacquered

We treated this wood with lacque.

C3 are only made for products without patination.



ASH C4 / OAK C4
Natural oiled

We treated this wood with our 'Natural oil'.



ASH C6 / OAK C6
White oiled

We treated this wood with our 'White oil'.



ASH C8 / OAK C8
Soaped

We treated this wood with soap.



ASH C11 / OAK C11
Dark grey oiled

We treated this wood with our 'Black oil'.



ASH C12 / OAK C12
Antique brown oiled

We treated this wood with our 'Antique brown oil'.



ASH C13 / OAK C13
Light grey oiled

We treated this wood with our 'Light grey oil'.



ASH C14 / OAK C14
Black stained & oiled

We treated this wood with black stain, and treated it with a wax oil.

C14 is for legs and storage furniture only!



ASH C15 / OAK C15
Mocca brown oiled

We treated this wood with our 'Mocca brown oil'.



ASH C16
Warm white oiled

We treated this wood with our 'Warm white oil'.

C16 is only for ash



ASH C20 / OAK C20
Grey brown oiled

We treated this wood with our 'Grey brown oil'.



ASH C44 / OAK C44
Black matt lacquered

We treated this wood with black stain, and treated it with matt lacque.

C44 is only for plates and can only be made for products without patination.



For more information about maintenance, please visit our website:
WWW.KRISTENSEN.COM



We also offers our own repairoils for our products
- contact us if you need a pricelist.

WOOD FINISH



UP

Without patination

The wood is planned and sanded to achieve a smooth surface.

With few and smaller knots.



FK

Filled Knots

The knots are filled and the wood is planned and sanded to achieve a smooth surface.

Only for OAK!

Storage furniture can only be made with this finish!

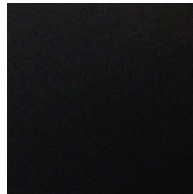
LEG DETAIL



A

Industri stål

Industrielt stål har et rått og mat udseende, med forskellige farvenuancer - opstået under fremstilling.



B

Black painted steel

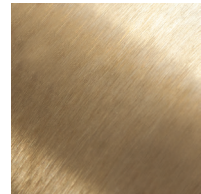
Black painted steel has a graphical and simple look, that fits nicely in most homes.



C

Børstet rustfrit stål

Børstet rustfrit stål har en elegant fremtoning, med en ensartet finish, skabt i hånden.



M

Brass

Brass will get natural patina over time. Do not use water or anyother liquid when cleaning – only use a dry cloth!

EDGE PROFILES



Edge profile 1

Harlekin (angled)



Edge profile 2

Arched



Edge profile 3

Pisa (rounded)



Edge profile 4

Straight



Edge profile 6

Wing



FSC® CERTIFICATE

A commitment for a better tomorrow



We are happy to announce that from 2021 we have achieved the certification that enables us to offer FSC®-labelled products. FSC® stands for "Forest Stewardship Council" and is an international non-profit organisation dedicated to promote responsible forestry. FSC® certifies forests all over the world to ensure that they meet the highest environmental and social standards.

By signing this contract, we have committed ourselves to living up to stricter social requirements and a more sustainable production. We are proud of supporting the FSC® with their work in looking after the forest workers and the wood industry, as well as fighting unsustainable, illegal forestry and deforestation.

The FSC® certification is one of our key initiatives in creating a more sustainable production. We acknowledge that this sustainable transition is a longer journey and not something that happens overnight. But each day they we are committed in doing a little better than yesterday and keep making progress in this matter.

**PLEASE VISIT OUR WEBSITE FOR
MORE FSC® RELATED INFORMATION**

www.kristensen.com



The mark of
responsible forestry

CONTACT

CUSTOMISED TABLES

We are able to produce all our table types in special sizes. Furniture in special sizes requires special handling both in terms of manual handling, new drawings, machine settings and packaging. We therefore include a sur-charge for products in special sizes, whether the product will be larger or smaller. If you want a table in a smaller size e.g, the price is added 15% on the price of the nearest standard size.

Contact us for more information!

Agent, Norway

Paal Stenvaag

—

✉ post@mobelpaal.no

☎ +47 926 18 628

Agent, Finland

Jokko Salmevaara

—

✉ jokko.salmevaara@boknas.fi

☎ +358 401 958 886

Sweden

Steen Tokkesdal (temporarily)

—

✉ st@kristensen.dk

☎ +45 41 22 00 22

Agent, UK

Brendan Brett

—

✉ kristensen@theukagency.co.uk

☎ +44 77 34 265 599

Head office, Denmark

PHONE:

+45 75470303

WEBSITE:

www.kristensen.com

MAIL:

kristensen@kristensen.dk

ORDER MAIL:

order@kristensen.dk

CLAIMS:

claim@kristensen.dk

FAX:

+45 75470304

ADDRESS:

Kristensen & Kristensen A/S
Storstrømsvej 44
6715 Esbjerg N
DK - Denmark

TERMS & CONDITIONS

—

Can be sent via email by request – contact:

kristensen@kristensen.com

