

Range
—
AKUSTIK



PRICELIST
PURCHASE – EURO

EXPORT
15.02.2022



Range

AKUSTIK

This series is designed with a desire to improve the acoustics of the home. The combination of wooden slats and felt is not only thought into the design to please the eye - but just as much to deflect and engulf reverberation.

Designed by

Steffensen & Würtz



This range include

Sideboards | HIFI sideboards
Highboards
Dining tables | Coffee tables

Features



Design elements

Choose between different designs.



Custommade

In addition to our many standard sizes we can accommodate special requests.



Wood colours

Choose between more than 10+ different wood colours in both ash and oak.



Sustainable choice

Solid wood furniture can last a lifetime with proper maintenance

Social media

Follow and share with us on Instagram.



@kristensenfurniture | #kristensenfurniture

Online Pricelist- and imagebank

On our sharefile you as a retailer always have access to the newest pricelists and hundreds of high resolution images and videos
— **Free to use in your marketing!**

If you do not have an account yet, please contact us and then we will set it up for you!

SHAREFILE

<https://kristensenfurniture.sharefile.com>

PRICELIST

Round Dining Table



Round table w/3 cm plate (H74 cm)		Leaf, 3 cm	
		For extendable table (AKTR3)	
D	Not divided (AKDR3H)	Extendable* (AKDR3M)	B 50

*Can be extended with 4 leaves.

D120 = 1 support leg. D130 and larger = 2 support leg.

PRICELIST

Rectangular Dining Table



Dining table w/3 cm plate (H74 cm)	
Prepared for leaves in end (AKD3H)	
L 280	
260	
240	
220	
200	
180	

B 100

Endeplate 3 cm	
(AK3E)	
L 50	

B 100

Ash is standard - Oak + 25%

Legs are mount 23 cm from table end.

All prices are purchase prices in Euro.

We accept no liability for any errors or omissions.

PRICELIST

Coffee Tables



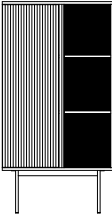
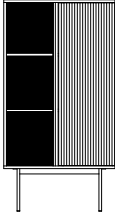
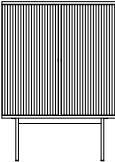
Coffee table w/3 cm plate			
Size (cm)	item no.	price (EUR)	
		Ash	Oak
Ø86 H48 cm	AKCR3-86H48		
Ø72 H42 cm	AKCR3-72H42		

PRICELIST

Highboard (with black felt)



All Akustik highboards and sideboards are made with soft-close mechanism. The wooden battens act as handles.

Highboard w/black felt on door + on back in open room						
description	item no.	dimentions (cm)			price (EUR)	
		W	D	H corpus / total	Ash	Oak
 2 shelves, 1 door left, 1 open room	AKHL	83	42	127 / 159		
 2 shelves, 1 door right, 1 open room	AKHR	83	42	127 / 159		
 1 shelf, 2 doors	AKH2	87	42	87 / 119		

Ash is standard - Oak + 15%

Brushed stainless steel legs = +10%

All prices are purchase prices in Euro.

We accept no liability for any errors or omissions.

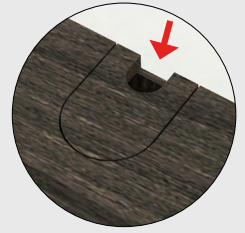
PRICELIST

Sideboard & HiFi (with black felt)



AKS2DK* / AKSDRK* / AKSDLK*

These variants are with a wooden plug/hole for wires centered in the top, against the wall. And with wire holes in the back.



Sideboard w/black felt on door + on back in open room						
description	item no.	dimentions (cm)			price (EUR)	
		W	D	H corpus / total	Ash	Oak
 1 shelf, 2 doors, 1 open room	AKS2	208	42	50 / 71		
 1 shelf, 1 door left, 1 open room	AKSL	160	42	50 / 71		
 1 shelf, 1 door right, 1 open room	AKSR	160	42	50 / 71		
 1 shelf, 1 door left, 1 open room	AKSL	100	42	50 / 71		
 1 shelf, 1 door right, 1 open room	AKSR	100	42	50 / 71		
 1 shelf, 2 doors, 1 open room	AKS2K*	208	42	40 / 61		
 1 shelf, 1 door left, 1 open room	AKSLK*	160	42	40 / 61		
 1 shelf, 1 door right, 1 open room	AKSRK*	160	42	40 / 61		

Ash is standard - Oak + 25%

Brushed stainless steel legs = +10%

All prices are purchase prices in Euro.

We accept no liability for any errors or omissions.

kristensen:kristensen®

All rights reserved Kristensen & Kristensen A/S

7 / 10



Images for guiding purpose only!
The wood structure and colour will vary from ash and oak.

We therefore recommend using the wood samples/exhibition furniture to get a more accurate impression.

WOOD COLOURS



ASH C3 / OAK C3
Lacquered

We treated this wood with lacque.

C3 are only made for products without patination.



ASH C4 / OAK C4
Natural oiled

We treated this wood with our 'Natural oil'.



ASH C6 / OAK C6
White oiled

We treated this wood with our 'White oil'.



ASH C8 / OAK C8
Soaped

We treated this wood with soap.



ASH C11 / OAK C11
Dark grey oiled

We treated this wood with our 'Black oil'.



ASH C12 / OAK C12
Antique brown oiled

We treated this wood with our 'Antique brown oil'.



ASH C13 / OAK C13
Light grey oiled

We treated this wood with our 'Light grey oil'.



ASH C14 / OAK C14
Black stained & oiled

We treated this wood with black stain, and treated it with a wax oil.

C14 is for legs and storage furniture only!



ASH C15 / OAK C15
Mocca brown oiled

We treated this wood with our 'Mocca brown oil'.



ASH C16
Warm white oiled

We treated this wood with our 'Warm white oil'.

C16 is only for ash



ASH C20 / OAK C20
Grey brown oiled

We treated this wood with our 'Grey brown oil'.



ASH C44 / OAK C44
Black matt lacquered

We treated this wood with black stain, and treated it with matt lacque.

C44 is only for plates and can only be made for products without patination.

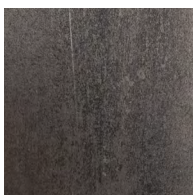


For more information about maintenance, please visit our website:
WWW.KRISTENSEN.COM



We also offers our own repairoils for our products
- contact us if you need a pricelist.

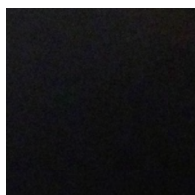
STEEL COLOUR & FINISH



A

Industrial steel

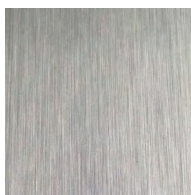
Industrial steel has a raw and matte appearance with shades of colors emerged during casting.



B

Black painted steel

Black painted steel has a graphical and simple look, that fits nicely in most homes.



C

Brushed stainless steel

Brushed, stainless steel has an elegant appearance with a uniform finish created by hand.

Extra cost!

EDGE PROFILES on tables & coffee tables



1

Harlekin edge



2

Arched edge



3

Rounded edge



4

Straight edge

CONTACT

CUSTOMISED TABLES

We are able to produce all our table types in special sizes. Furniture in special sizes requires special handling both in terms of manual handling, new drawings, machine settings and packaging. We therefore include a surcharge for products in special sizes, whether the product will be larger or smaller. If you want a table in a smaller size e.g. the price is added 15% on the price of the nearest standard size.

Contact us for more information!

Agent, Norway

Paal Stenvaag

✉ post@mobelpaal.no

☎ +47 926 18 628

Agent, Finland

Jokko Salmevaara

✉ jokko.salmevaara@boknas.fi

☎ +358 401 958 886

Agent, Sweden

Mikael Deragården

✉ mikael@deragarden.com

☎ +46 0702 115 125

Agent, UK

Brendan Brett

✉ kristensen@theukagency.co.uk

☎ +44 77 34 265 599

Head office, Denmark

PHONE:

+45 75470303

WEBSITE:

www.kristensen.com

MAIL:

kristensen@kristensen.dk

ORDER MAIL:

order@kristensen.dk

CLAIMS:

claim@kristensen.dk

FAX:

+45 75470304

ADDRESS:

Kristensen & Kristensen A/S
Storstrømsvej 44
6715 Esbjerg N
DK - Denmark

TERMS & CONDITIONS

Can be sent via email by request – contact:
kristensen@kristensen.com

