

*Range*  
—  
**MEET**



—  
**PRICELIST**

—  
**PRESS**  
01.04.2025



## Range

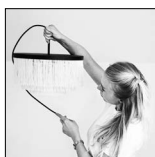
# MEET

The unique feature of the MEET range is the “floating detail” between the legs and the plate.

In this pricelist you will also find some geometrical and elegant coffee tables / side tables with steel legs.

### Designed by

Cecilie Kamp



### This range include

Coffee tables  
Stools  
Side tables

## Features



### Design elements

Choose between different designs and products.



### Custommade

In addition to our many standard sizes we can accommodate special requests.



### Wood colours

Choose between more than 10+ different wood colours in both ash and oak.



### Sustainable choice

Solid wood furniture can last a lifetime with proper maintenance

## Social media

Follow and share with us on Instagram, Pinterest & LinkedIn.



@kristensenfurniture | #kristensenfurniture



kristensenfurniture | Kristensen & Kristensen



Kristensen & Kristensen | #kristensenfurniture

## Pricelist- and imagebank

On our Collection-site you as a retailer always have access to the latest pricelists and hundreds of high resolution images and videos  
- Free to use in your marketing!

If you do not have a password yet, please contact the Kristensen sales office in Denmark.

### LINK:

[collection.kristensen.com](https://collection.kristensen.com)

# PRICELIST

3-legged stool / side table

---



OVERALL ITEM NO.: MEST			
(3 cm plate thickness)			
Measures (cm)	Price group	Price (EUR)	
		Ash	Oak
D39 H45	1		
D39 H45	2		
D39 H45	3		
D39 H45	4		
D39 H45	5		

## PRICE GROUP / FABRIC

—

**1** / Textafoam **Mine** 2 selected colours  
or a 3 cm thick solid wood seat  
(w/no upholstery)

**2** / Textafoam **Alpine** 3 selected colours

**3** / Nevotex **Wooly** 3 selected colours

**3** / Nevotex **Margrethe** 1 selected colour

**3** / Gabriel **Grain** 4 selected colours

**4** / Nordic Spoor **Sigma** 3 selected colours

**5** / Sørensen Leather **Terra** 3 selected colours



See all the fabrics to  
choose from - in the  
back of this pricelist!

# PRICELIST

## 3-legged coffee table

---



OVERALL ITEM NO.: MECT			
(3 cm plate thickness)			
Measures (cm)	Item no.	Price (EUR)	
		Ash	Oak
D60 H45	MECT-60H45		
D60 H50	MECT-60H50		
D90 H45	MECT-90H45		
D90 H50	MECT-90H50		
D110 H45	MECT-110H45		
D110 H50	MECT-110H50		
D120 H45	MECT-120H45		
D120 H50	MECT-120H50		

# PRICELIST

Round side table w/steel legs & handle

---



OVERALL ITEM NO.: WGR			
(3 cm plate thickness)			
Measures (cm)	Item no.	Price (EUR)	
		Ash	Oak
D38 H42/54*	WGR38X42		
D38 H48/60*	WGR38X48		
D42 H42/54*	WGR42X42		
D42 H48/60*	WGR42X48		

\*plate hight/total hight

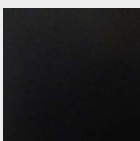
## Leg options

5x30 mm solid steel

---



**A**  
Industrial  
steel



**B**  
Black  
painted steel



# PRICELIST

Round coffee table w/steel legs



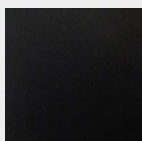
OVERALL ITEM NO.: WCI			
(3 cm plate thickness)			
Measures (cm)	Item no.	Price (EUR)	
		Ash	Oak
D40 H51	WCI40X51		
D40 H61	WCI40X61		
D70 H41	WCI70X41		
D70 H51	WCI70X51		
D100 H41	WCI100X41		
D100 H51	WCI100X51		

## Leg options

8x30 mm solid steel



**A**  
Industrial  
steel



**B**  
Black  
painted steel

# WOOD COLOURS

---



**Images for guiding purpose only!**

The wood structure and colour will vary from ash and oak.

We therefore recommend using the wood samples/exhibition furniture to get a more accurate impression.



**ASH C3 / OAK C3**  
Lacquered

We treated this wood with lacque.

**C3 are only made for products without patination.**



**ASH C4 / OAK C4**  
Natural oiled

We treated this wood with our 'Natural oil'.



**ASH C6 / OAK C6**  
White oiled

We treated this wood with our 'White oil'.



**ASH C8 / OAK C8**  
Soaped

We treated this wood with soap.



**ASH C11 / OAK C11**  
Dark grey oiled

We treated this wood with our 'Black oil'.



**ASH C12 / OAK C12**  
Antique brown oiled

We treated this wood with our 'Antique brown oil'.



**ASH C13 / OAK C13**  
Light grey oiled

We treated this wood with our 'Light grey oil'.



**ASH C14 / OAK C14**  
Black stained & oiled

We treated this wood with black stain, and treated it with a wax oil.

**\* We recommend choosing the black matte lacquer color C44 for tabletops and chairs!**



**ASH C15 / OAK C15**  
Mocca brown oiled

We treated this wood with our 'Mocca brown oil'.



**ASH C16**  
Warm white oiled

We treated this wood with our 'Warm white oil'.

**C16 is only for ash**



**ASH C20 / OAK C20**  
Grey brown oiled

We treated this wood with our 'Grey brown oil'.



**ASH C44 / OAK C44**  
Black matt lacquered

We treated this wood with black stain, and treated it with matt lacque.

**C44 is only for products without patination.**

**\*Color C14 is a black stain with oil on top, which requires careful and frequent oiling. If this is not adhered to, there is a risk that the black underlying stain will rub off.**



For more information about maintenance, please visit our website:  
**WWW.KRISTENSEN.COM**



We also offers our own repairoils for our products  
- contact us if you need a pricelist.

## WOOD FINISH

---



### UP

#### Without patination

The wood is planned and sanded to achieve a smooth surface.

*With few and smaller knots.*

**Storage furniture can only be made with this finish!**



### FK

#### Filled Knots

The knots are filled and the wood is planned and sanded to achieve a smooth surface.

**Only for OAK!**



**5**

*Price group*

## TERRA

*Aniline leather*

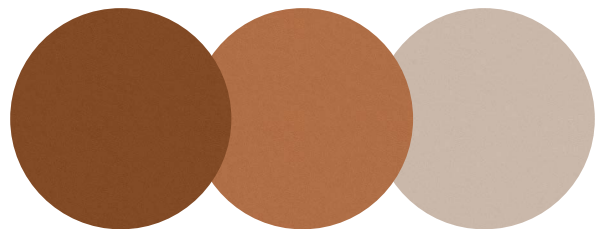
*Terra is an extremely soft aniline leather featuring a silky-matt surface with a subtle shine and a velvety tactile feel that evokes one's senses, offering a touch of modern sophisticated elegance. The sanded surface with depth gives Terra a beautiful vintage look.*

**Material:** 100% European aniline leather  
**Thickness:** 1,2 - 1,4 mm

**Manufacturer:**  
sorensenleather.com



**SØRENSEN**



**TERRA**  
—  
20360 Soil

**TERRA**  
—  
20371 Silt

**TERRA**  
—  
20365 Lime

**4**

*Price group*

## SIGMA

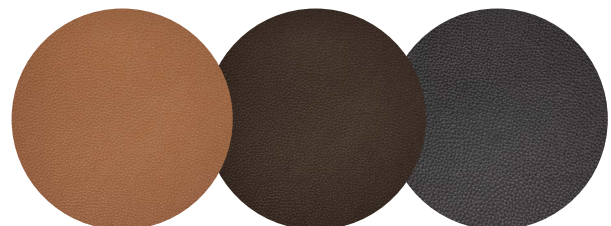
*Semianiline leather*

*Sigma is a high quality, Argentine semianiline leather. This leather has a nice texture and a super soft feel. This leather gives a practical yet luxurious chair.*

**Material:** 100% Argentine semianiline leather  
**Thickness:** 1,1 - 1,3 mm

**Manufacturer:**  
www.nordicspoor.com

**SPOOR.**



**SIGMA**  
—  
30010 Brandy

**SIGMA**  
—  
30042 Coffee

**SIGMA**  
—  
30001 Black

**3**

Price group

## GRAIN

*Recycled Polyester Bouclé*



*Grain is a post-consumer recycled polyester bouclé fabric. The fabric is designed in two versions that playfully complement each other. Choose between a solid version and a duo-coloured version.*

**Material:** 92% post-consumer recycled polyester / 8% polyester

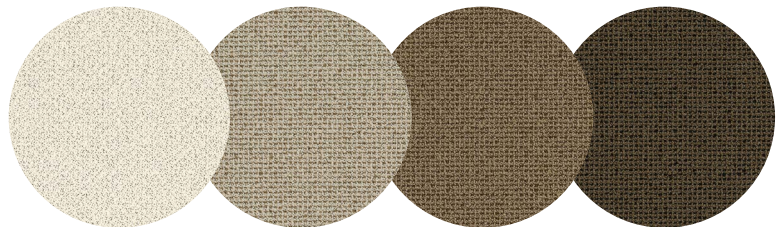
**Martindale:** 100,000

**Maintenance:** wash or dry cleaning

**Manufacturer:**

[www.gabriel.com](http://www.gabriel.com)

**Gabriel®**



**GRAIN**

—  
2287 / 61229

**GRAIN**

—  
2288 / 61253

**GRAIN**

—  
2288 / 61248

**GRAIN**

—  
2288 / 61249

**3**

*Price group*

**WOOLY**



*Recycled felted wool*

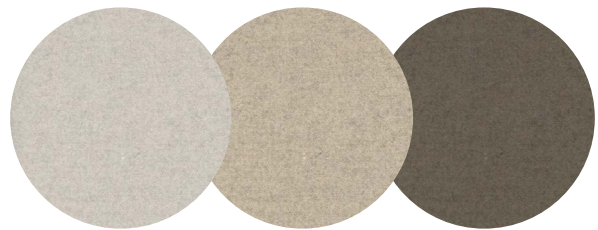


Wooly is made of felted recycled wool. It may be leftover material from clothing manufacturing or other wool products that are recycled. Each kilogram of pure new wool produced generates 9 kg of carbon dioxide. Processing 1 kilo of recycled wool generates just 0.5 kg of carbon dioxide.

Material: 70% recycled wool, 25% polyamide, 5% mixed fibers  
Martindale: 250,000

Manufacturer:  
[www.nevotex.com](http://www.nevotex.com)

**nevotex**



**WOOLY PLUS**

—  
2256 Ivory  
Melange

**WOOLY**

—  
2151 Beige

**WOOLY PLUS**

—  
9202 Taupe

**MARGRETHE**



*Recycled woven wool*



Margrethe is made of woven recycled wool. It may be leftover material from clothing manufacturing or other wool products that are recycled. Each kilogram of pure new wool produced generates 9 kg of carbon dioxide. Processing 1 kilo of recycled wool generates just 0.5 kg of carbon dioxide.

Material: 70% recycled wool, 25% polyamide, 5% mixed fibers  
Martindale: 250,000  
Maintenance: dry cleaning

Manufacturer:  
[www.nevotex.com](http://www.nevotex.com)

**nevotex**



**MARGRETHE**

—  
16 Antracite

**2**

*Price group*

# ALPINE

*Polyester Bouclé*



Alpine is a soft, voluminous and elegant bouclé woven quality.

Material: 96% Polyester 4% Acrylic Fibres

Martindale: 75.000

Maintenance: Wash or dry cleaning

Manufacturer:

[www.textafoam.eu](http://www.textafoam.eu)

**Textafoam**



ALPINE

—  
01 Natural

ALPINE

—  
15 Brown

ALPINE

—  
18 Darkbrown

**1**

*Price group*

# MINE

*Polyester Chenille*



Mine is a soft yet durable chenille fabric with many applications.

Material: 96% Polyester, 4% Nylon

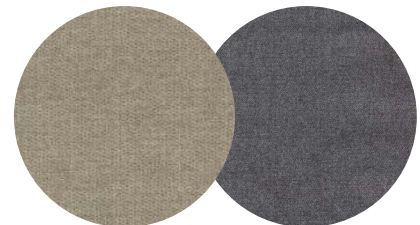
Martindale: 45.000

Maintenance: Wash or dry cleaning

Manufacturer:

[www.textafoam.eu](http://www.textafoam.eu)

**Textafoam**



MINE

—  
196 Shell

MINE

—  
65 Grey

# CONTACT

Contact us for more information!



## STOOLS WITH FABRIC TO THE UK MARKET

At the moment it is unfortunately not possible for us to offer any of the featured fabrics to the UK domestic market.

### Agent, Norway

Lennarth Gryting

✉ lg@kristensen.dk

☎ +47 922 95 400

### Agent, Finland

Jokko Salmevaara

✉ jokko.salmevaara@boknas.fi

☎ +358 401 958 886

### Sale, Sweden

Anne Moberg

✉ am@kristensen.dk

☎ +46 707580279

### Agent, UK

Brendan Brett

✉ kristensen@theukagency.co.uk

☎ +44 77 34 265 599

### Head office, Denmark

#### PHONE:

+45 75470303

#### WEBSITE:

www.kristensen.com

#### MAIL:

kristensen@kristensen.dk

#### ORDER MAIL:

order@kristensen.dk

#### CLAIMS:

claim@kristensen.dk

#### FAX:

+45 75470304

#### ADDRESS:

Kristensen & Kristensen A/S  
Storstrømsvej 44  
6715 Esbjerg N  
DK - Denmark

#### TERMS & CONDITIONS

Can be sent via email by request – contact:  
**kristensen@kristensen.com**

